

## NEXT STEPS

The Master Plan document sets forth a vision and is only the beginning. The following guideline provides a recommended approach to building Heritage Park.

- 1. Schematic Design:** To see the vision become a reality detailed schematic design, design development and construction documentation will be required. Given this park's location in a dynamic river system, careful consideration of the existing geo-technical profile, hydrology, artful grading and establishment of plant communities will be required.
- 2. Fundraising:** In general, those items which provide the most benefit for the investment should come first, with careful consideration to the order, means and methods, and which will be utilized by the selected contracting team or teams.
- 3. Groundbreaking:** Park construction will begin in 2018, and will be determined by an appropriate phasing strategy.



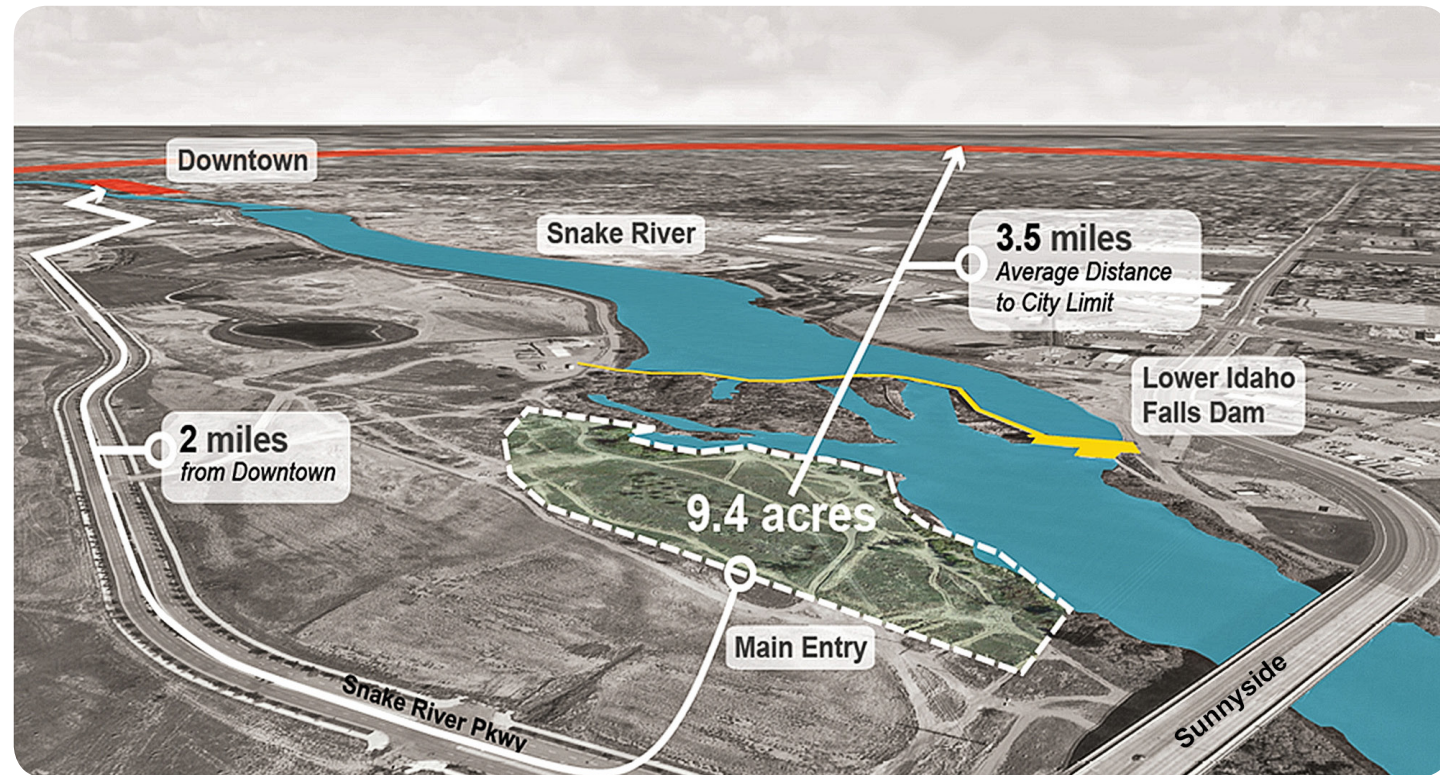
# HERITAGE PARK MASTER PLAN

## THE NEWEST PARK IN IDAHO FALLS

The over 14 acre Heritage Park is made possible by a land donation and commitments by private and nonprofit partners, and is intended to highlight the natural, cultural, and historical heritage of Idaho Falls. The park's advantageous location along the Snake River presents a wonderful opportunity to add to the Idaho Falls Parks system. The Heritage Park theme was inspired by the community, a community that developed around the scenic Snake River and is uniquely vast in agricultural, nuclear and hydroelectric power. The theme for the park will represent and celebrate this heritage.

Heritage Park will also celebrate the area's impressive natural resources. There is a growing concern that kids and families are becoming increasingly disconnected with the outdoors. Current research confirms this disconnect and demonstrates that children who interact regularly in the outdoors are more mentally acute, physically healthy, socially adept, and more likely to maintain a positive disposition toward the environment and natural resources as adults. Heritage Park will play an important role in connecting children and families to nature while blending the richness of the area's culture.

## LOCATION



Heritage Park is located 2 miles from downtown Idaho falls and will play an important role in the City's larger regional greenbelt and river walk system. The broad connection implies that Heritage Park will serve future neighbors as well as the greater Idaho Falls community. While the park site has excellent examples of riparian ecosystems along the river, the majority of the site has been mined for sand and gravel leaving many erosion prone, non vegetated areas with low ecological value.

## MASTER PLAN HIGHLIGHTS



### THE SNAKE STREAM

This small diversion offers the opportunity for unique educational and play programming for visitors of all ages.



### TRAILS

A network of trails of varying width, and media are imagined to frame the park, allowing visitors to wander, exercise, and explore.



### SURFACE WATER GARDENS

Water plays an integral role in Heritage Park with the Snake River, the water diversion stream and the surface water rain gardens.



### ISLAND EXPLORATION

The island area below the damn allow visitors to see the dynamic systems that establish these areas.

## MASTER PLAN HIGHLIGHTS



### THE SNAKE RIVER PROMONTORY

The Snake River Promontory is envisioned as a mound with a spiraling walk and staircase that allows visitors to access the top. A vertical tower on top would allow an expansive view of the Snake River and valley.



### HERITAGE STOPS

In homage to its setting, the park will feature educational heritage stops around the park to teach visitors about local history, ecology, and geology.



### COMMUNITY EVENTS GREEN / AMPHITHEATER

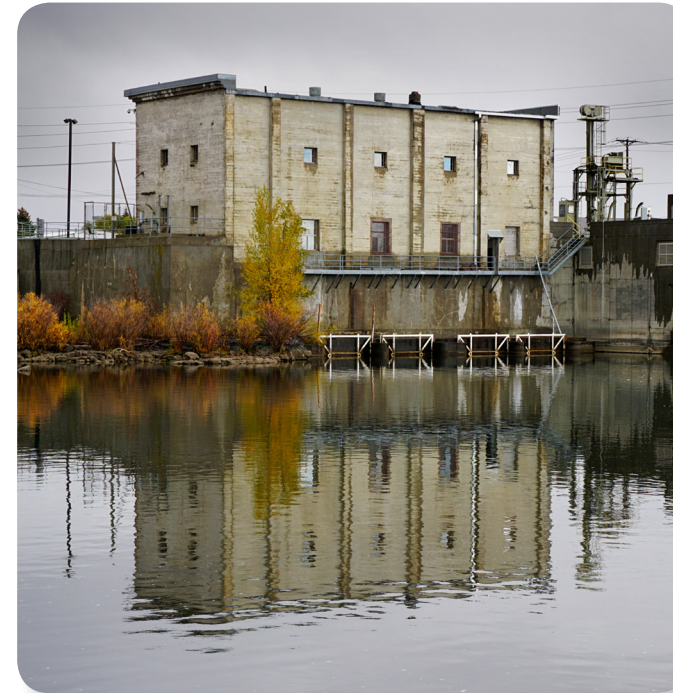
A community events green/amphitheater allows a venue for accommodating special events of varying scales. The amphitheater seating is envisioned as earthen berms with integrated benched flat areas.



### NATURE PLAY

One of the goals of Heritage Park is to encourage children and families to engage with nature. A dedicated nature play area facilitates this experience by utilizing natural elements to encourage play.

## THE SITE'S UNIQUE CHARACTERISTICS



Heritage



Lava Flows



Riparian Systems



Secondary Channel

## THE VISION

A one of a kind opportunity to create a choice destination that celebrates a prominent location along the Snake River.

# HERITAGE PARK MASTER PLAN



Sunnyside

Snake River Parkway

Surface Water Gardens

Snake River Promontory

Community Events Green/Amphitheater

Island Exploration

Heritage Trail Network  
Snake Stream  
Nature Play Area  
Riverwalk Trail

